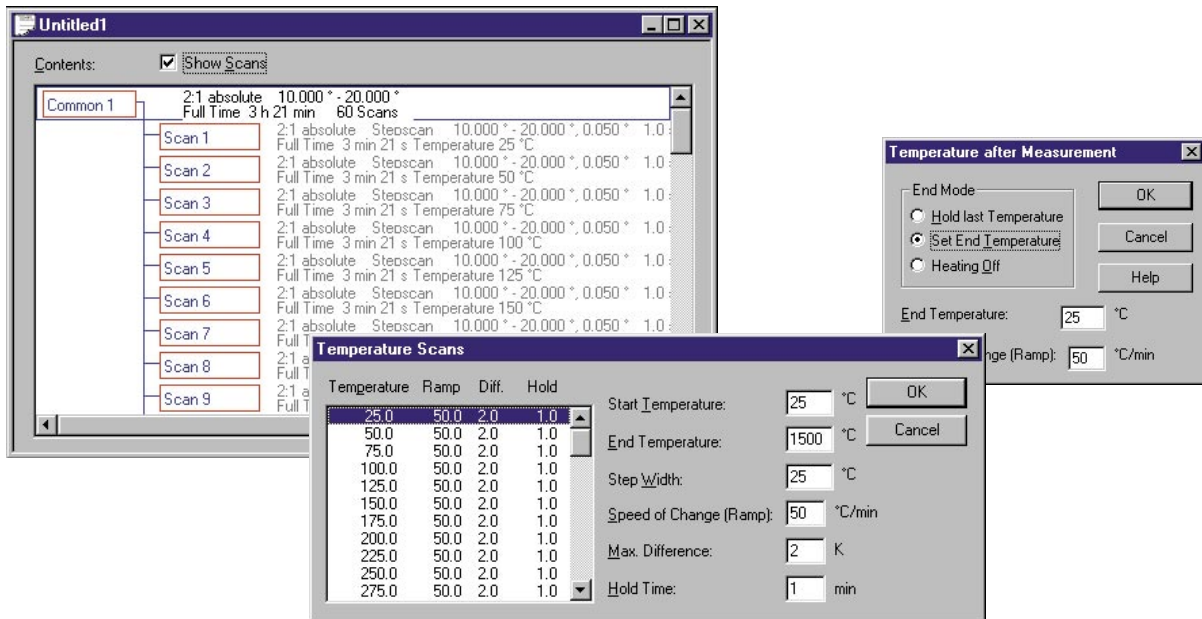


# SEIFERT RAYFLEX Measure

Option: TEMPERATURE



## Features

- Preparation of temperature templates and measurement of high and low temperature scans with different temperature chambers
- Easy definition of temperature loops with equal or user defined steps
- Individual temperature curve definition by temperature change
- Preselection of temperature after measurement
  - Hold last temperature
  - Set end temperature
  - Heating off
- Different measurements in one job or as job list
- Online graphics during measurement

