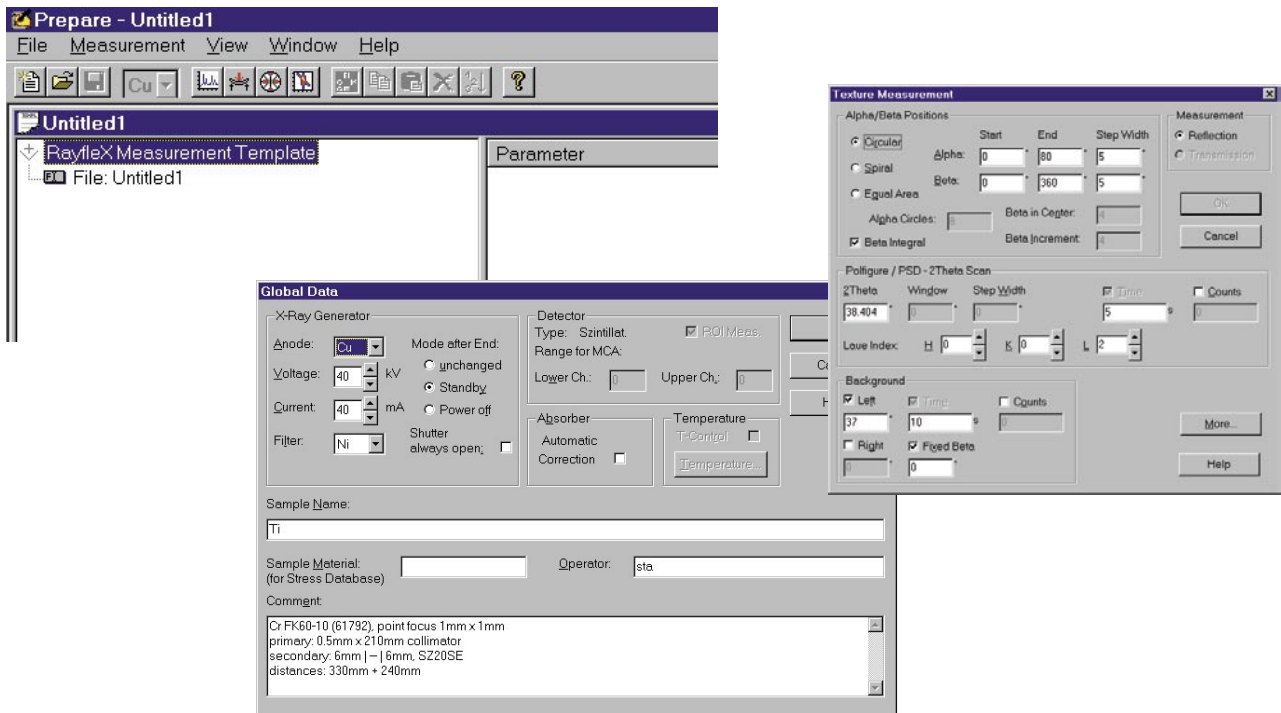


SEIFERT RAYFLEX Measure

Option: TEXTURE



Features

- Preparation of texture templates and measurement of pole figures (reflection or transmission) with time and/or counts preselection
- α and β start angles, end angles and steps determined by user
- Scanning in circular, spiral and equal area mode possible
- Measurement with fix β or β integral mode
- Background measurement at left and/or right side of pole figure
- Measurement of several pole figures simultaneously (position sensitive detector required)
- Different pole figures in one job or as job list
- Online graphics during measurement
- Detailed online help

GE imagination at work

