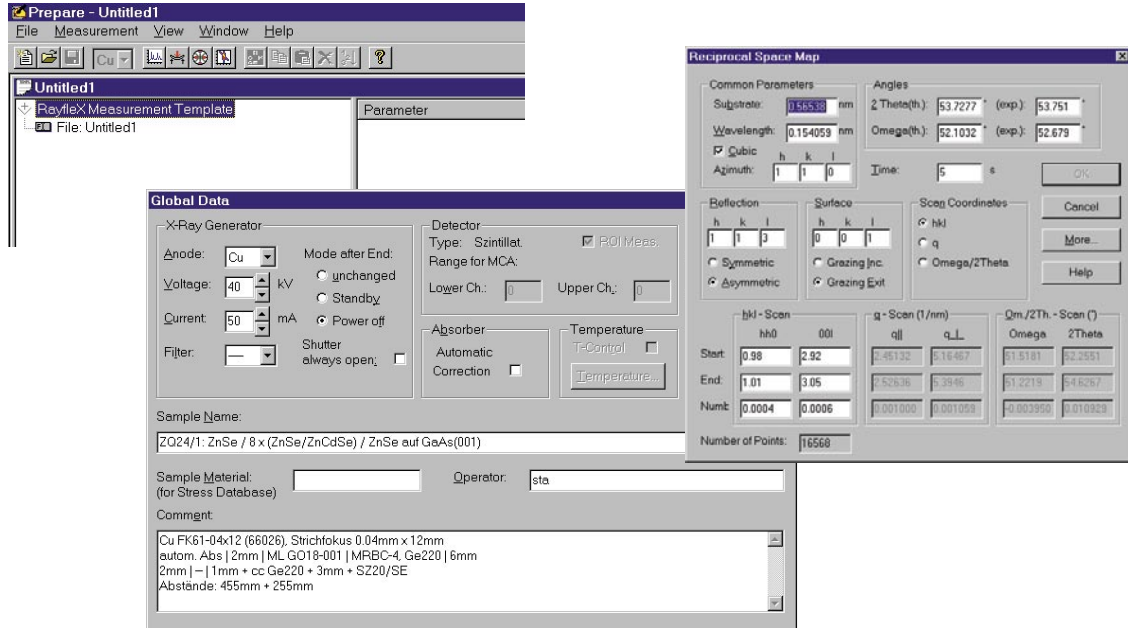


SEIFERT RAYFLEX Measure

Option: RECIPROCAL SPACE MAPPING



Features

- Preparation and measurement of reciprocal space maps in three different coordinates:
 - Omega, 2Theta (in °)
 - reciprocal lattice coordinates $q_{||}$, q_{\perp} (in 1/nm)
 - real Miller indices h, l (dimensionless)
- Reciprocal space maps for symmetric and asymmetric sample reflections
- Consideration of deviation of experimental Omega and 2Theta angles from calculated ones
- Online graphics during measurement

