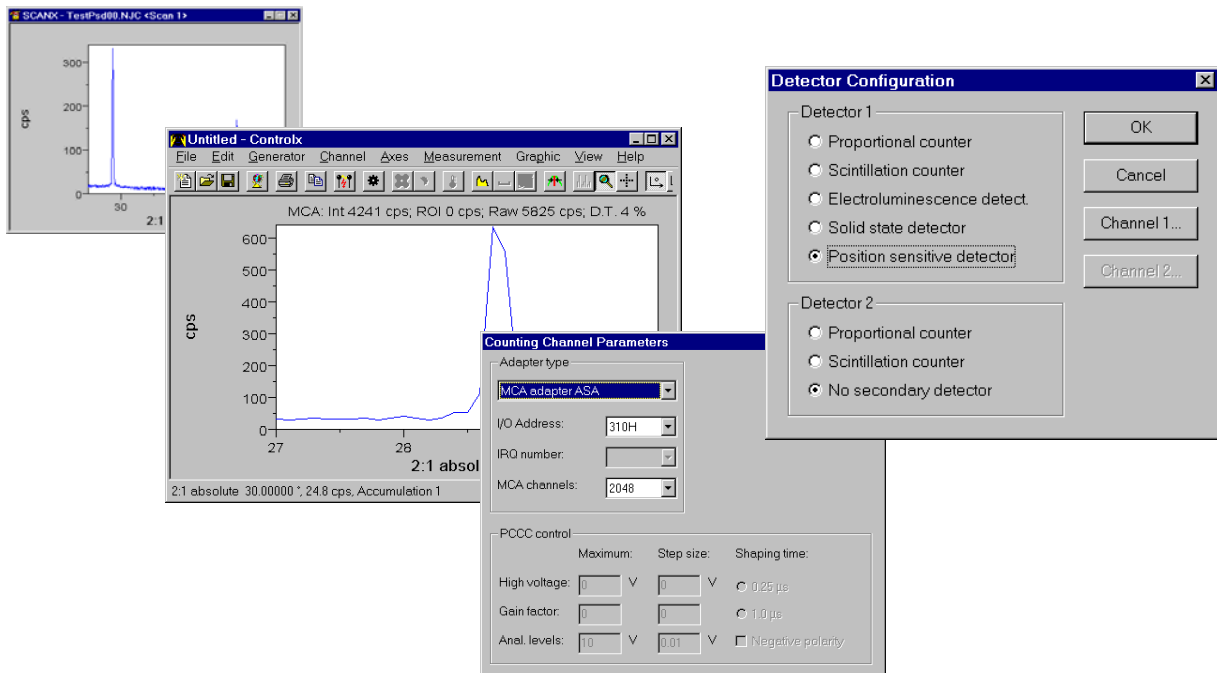


SEIFERT RAYFLEX Measure

Option: PSD



Features

- Static single range position sensitive measurements
- Large angular range measurements by user definable overlapping detector movements
- Energy and position calibration with experimental peak
- Fast stress measurements
- Fast acquisition of complete profile for each point of pole figure
- Fast data collection during temperature controlled measurements

GE imagination at work

