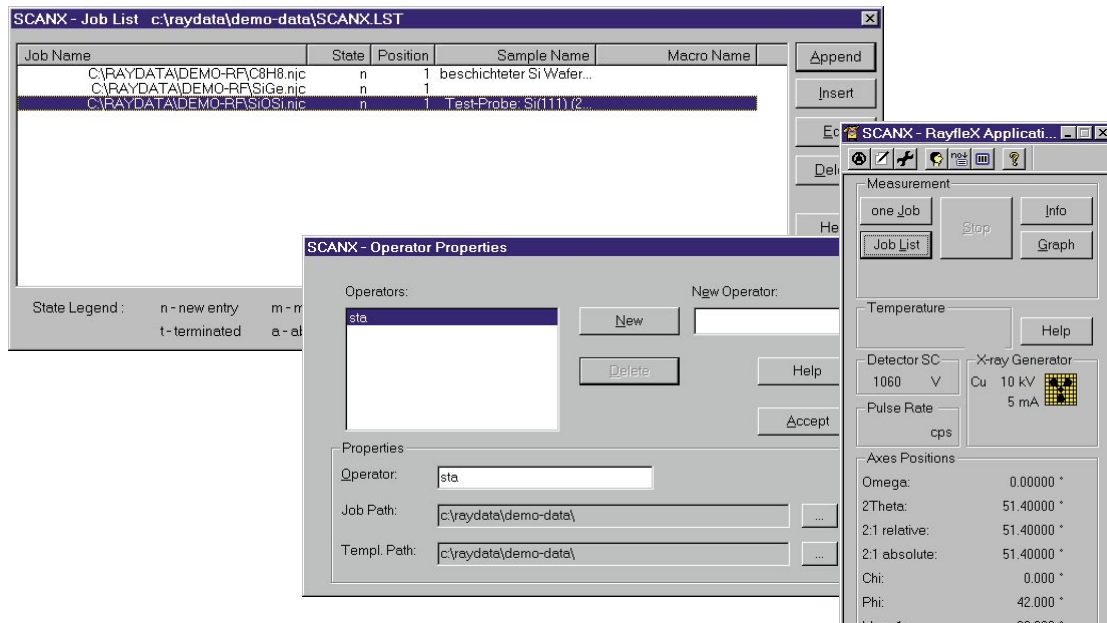


SEIFERT RAYFLEX Measure SCANX



Features

- Communication kernel of MEASURE for control and data management with XRD systems
- Status display of actual system operating conditions
- Definition of projects with user job path and template path
- Measurement of single jobs and job lists
- Sample changer setup in job lists
- Online graphics during measurement
- Management and display of a history file

