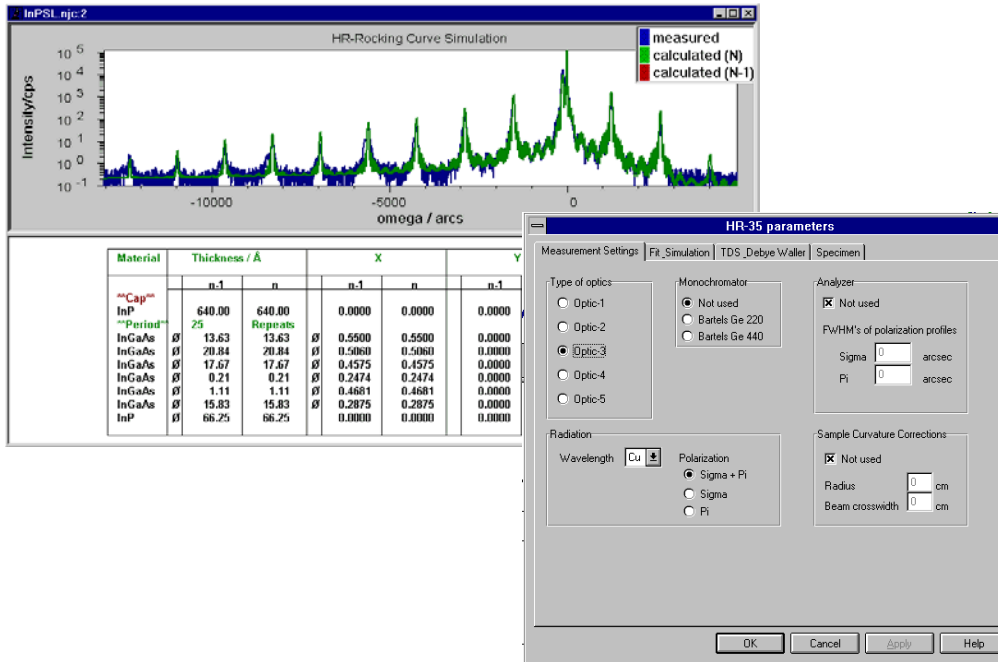


SEIFERT RAYFLEX Analyze

ROCKING CURVES



Features

- Fit and simulation of rocking curves based on dynamic diffraction theory in the formalism of Taupin
- Determination of thickness and composition of epitaxial layers
- Consideration of experimental beam path and polarization
- Consideration of 001,110 and 111 oriented substrates, of symmetric and asymmetric sample reflections, of parallel and perpendicular mismatches and of graded interfaces
- Powerful fitting possibility, choice between 4 different routines
- Consideration of constraints
- Simple interactive determination of layer parameters

