

Menu Directed Inspection[®]

Remote Visual Inspection

Guided Inspection Software



Menu Directed Inspection (MDI) from GE Measurement & Control Solutions is the first software tool to standardize the inspection process in the NDT industry. An XLG3™ or XL Go™ VideoProbe® system operating MDI software helps guide inspectors through the inspection process, intelligently auto-generates a report, and organizes their inspection results saving time, improving quality and increasing productivity.

Benefits

- Decrease reporting time up to 70%
- Increase speed and ease of sharing data
- Image and video files automatically named and annotated
- Create consistency and reduce errors with guided inspections
- Eliminate post inspection reporting with “click-to-report”
- Export data compatible with GE Measurement & Control Solutions’ Rhythm® software—a powerful NDT data management platform for centralizing and sharing your inspection data



The Value of MDI

There is hidden cost to create reports. For example, a typical report can take four hours to insert and format images. Through MDI, significant cost is eliminated.

	Manual	MDI
Cost Per Report	4 hrs x \$120/hr = \$480	0.5 hrs x \$120/hr = \$60
Reports Per Year	65	65
Annual Total Cost	\$31,200	\$3,900
Savings Per Inspector = \$27.3K		



Features

Standardized Inspection Plans

- Create asset specific digital inspection plans, available on all MDI enabled equipment
- Inspectors select from standard list to describe/identify images and videos
- Support engineers and asset owners receive results with digitally captured data, including standardized image identifying information, measurement data, inspector comments, MS Word formatted reports, and more.

Consistent Reporting

- Provides on-site inspection report in Word® format
- Automatically generates report with images and context
- Eliminates after-the-fact reporting
- Define report templates controlling the look, feel, and descriptions for specific inspections

Advanced MDI Tools

- Import reference materials such as inspection manuals, technical literature, or training references into your inspection plans (.pdf, .jpg, .bmp). Digital reference materials available as part of MDI right on VideoProbe.
- Create asset/location specific characterization lists.
- Current inspection status available real time as part of MDI.

Remote Expert

- Increase efficiency by sending consistent and standardized information to inspection experts
- Easily identify inspector “flagged” areas for further analysis.
- Easily share large amounts of visual images in reports as data is automatically compressed for easy email transmission.

Data Management

- Consistent, accessible asset health intelligence
- Digitally “Tagged” data available for archiving, trending, searching, and analysis
- Eliminates manual consolidation of images and handwritten inspection data

Language Support

MDI is available in the following languages: Chinese, English, French, German, Italian, Japanese, Korean, Polish, Portuguese, Russian and Spanish.

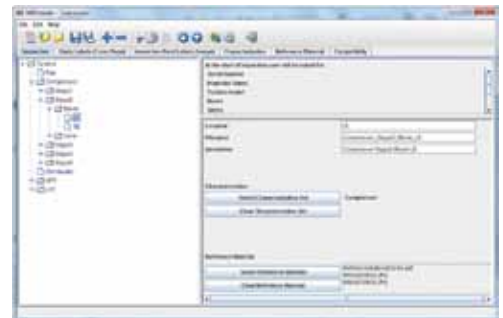
DICONDE (Digital Imaging and Communications for NDT)

- MDI output is compatible with Rhythm®
- ASTM DICONDE industry standard format (non-proprietary) for maximum capability and flexibility for customers

Software for Enhanced Productivity *(sold separately)*

- **Inspection Manager** - Includes tools for re-measurement of 3D Phase, Stereo, Shadow, and Comparison images, MDI Viewer, and image editing.
- **Rhythm** - Centralizes your NDT data and provides tools for further analysis and reporting.

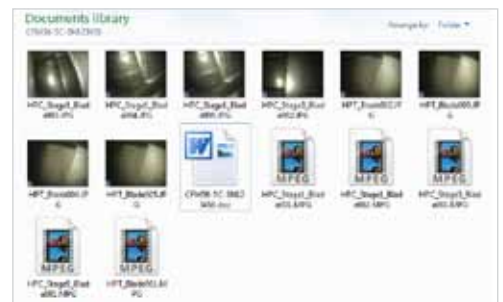
Note: All features may not be available on all VideoProbe systems.



MDI allows you to digitally define your inspection plans in an easy to use PC program. Completely customizable to define simple or complex asset inspections.



Digitally tag your images and videos using MDI on the VideoProbe. All inspectors follow the prescribed, asset specific plans.



MDI automatically organizes your inspection data for you. Still image and video file names are generated by location in the asset. A MS Word inspection report is automatically created. All data is digitally captured and organized.



MDI generates a customized MS Word report right on the VideoProbe. Inspection and Image details, measurements, characterizations, and comments all added automatically.



www.geinspectiontechnologies.com

GEIT-65032EN (10/11)